

Near Falls and Falls

Fall 2017

Overview

- ▶ Pinning Area
- ▶ Near Fall
- ▶ Technical Fall
- ▶ Fall
- ▶ Referee Considerations

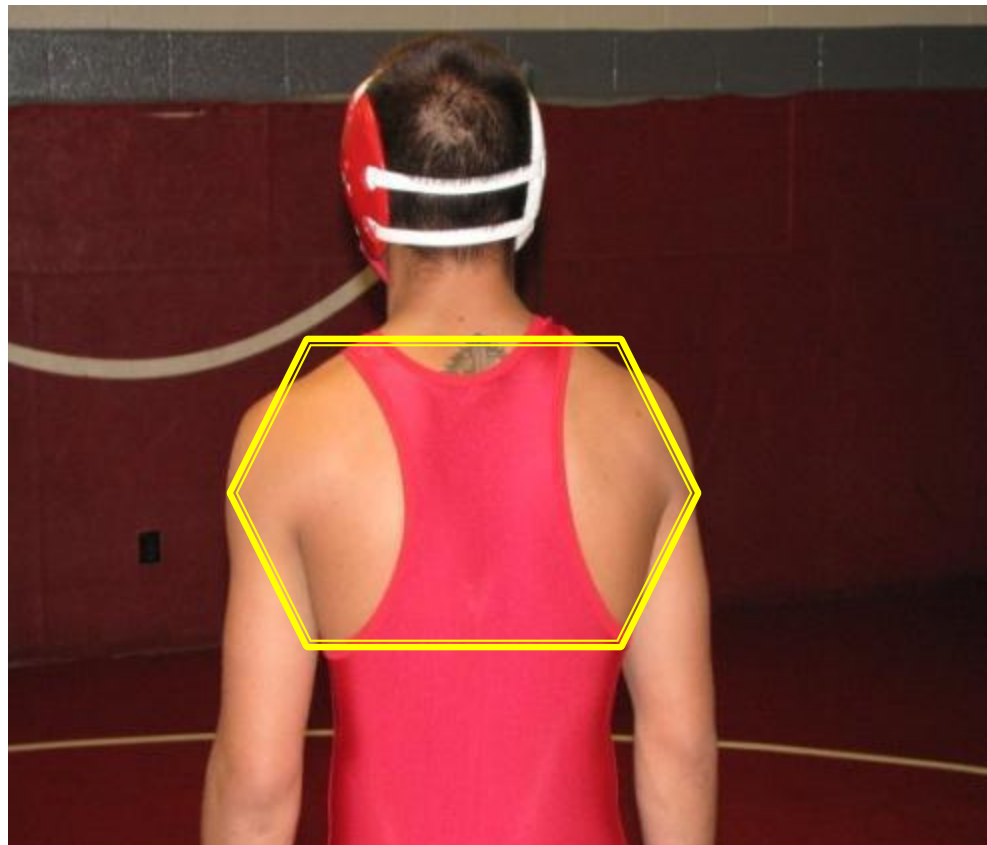
Near Falls and Falls

▶ Sources

- Rules Book
- Case Book
- CWOA DVDs
- CWOA Officiating Standards Pamphlet

Near Falls and Falls

- ▶ Pinning Area



Near Falls and Falls

▶ Near Fall

◦ Typical Situation

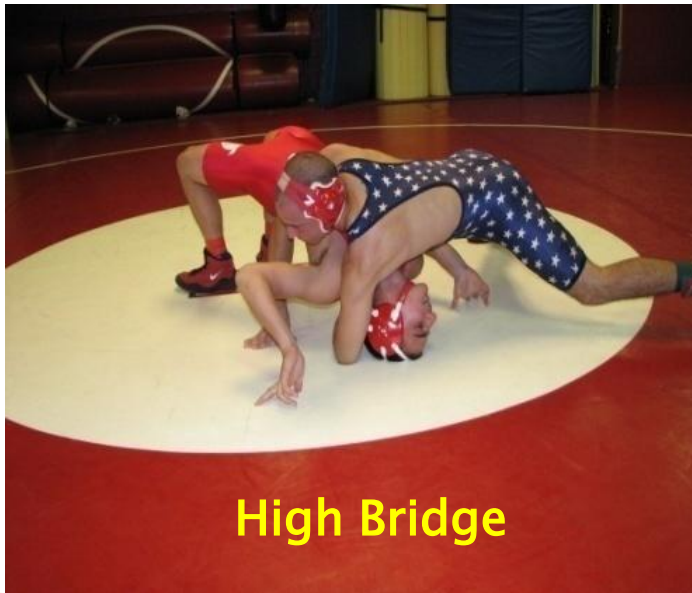
- 45 Degree Angle with one shoulder or scapula down on mat
- Offensive wrestler in-bounds
- Defensive wrestler stays on mat
- 2 Points Awarded, 2–4 Seconds
- 3 Points Awarded, 5 seconds

Near Falls and Falls

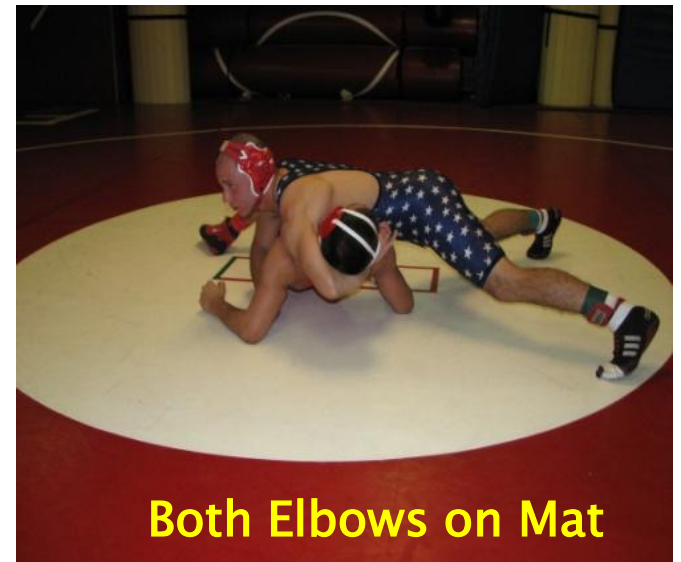
▶ Near Fall

◦ Other Situations

- High bridge
- Both elbows down on mat
- Pinning area held within 4 inches of mat



High Bridge



Both Elbows on Mat

Near Falls and Falls

▶ Near Fall

- Scored only by person in advantage position
 - Defensive wrestler can only earn a Fall
- Points awarded only after defensive wrestler reaches defensible base
 - Examples: Tilts, Cradles
- Injuries / Blood by defensive wrestler
 - Imminent Near Fall, less than 2 seconds – 2 Points
 - 2 Near Fall Earned – 3 Points
 - 3 Near Fall Earned – 4 Points
- Illegal holds, etc.
 - Stop match when able, award NF points, penalty point

Near Falls and Falls

▶ Technical Fall

- 15 Point Difference Attained
- If takedown or reversal to back
 - Allow to continue for possible Fall
 - Stop match once wrestler is off back
- Match is over
 - Offensive wrestler can only lose if he commits Flagrant Misconduct

Near Falls and Falls

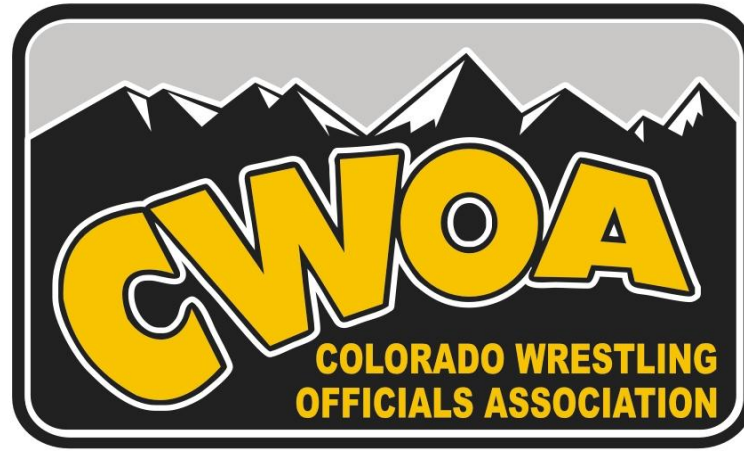
▶ Fall

- Pinning area held to mat for 2 consecutive seconds
- Referee must see this to call it

Near Falls and Falls

▶ Referee Considerations

- Make sure wrestler is in Near Fall Criteria
- Count both visually and verbally
- Practice Near Fall count
- Hold NF points on correct hand
 - Award points properly once situation ends
- Get in position to see pinning situation
 - Position may not be optimum at first
 - Always improve position and view angle to see back exposure



Near Falls and Falls

Fall 2013